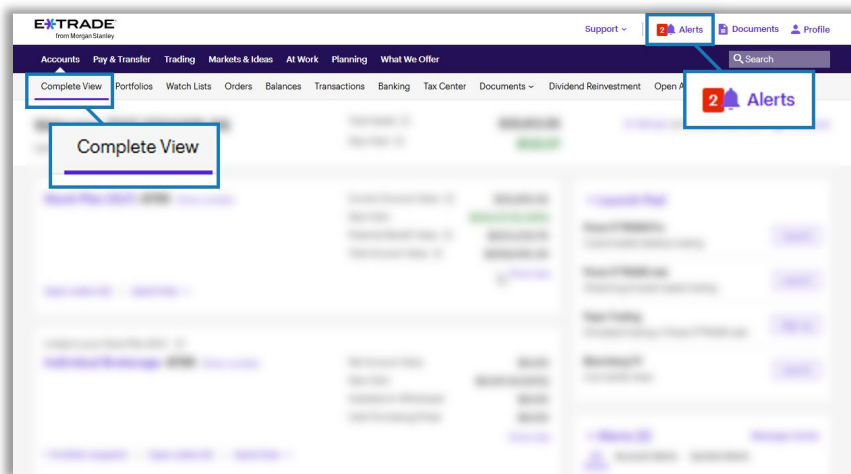


Navigating Your Morgan Stanley at Work Stock Plan Account on etrade.com

(For Participants in the U.S.)

Overview

No matter what type of equity you have, your E*TRADE from Morgan Stanley stock plan account will be set up the same way. Follow the guide below to learn how to view and manage your stock plan benefits.



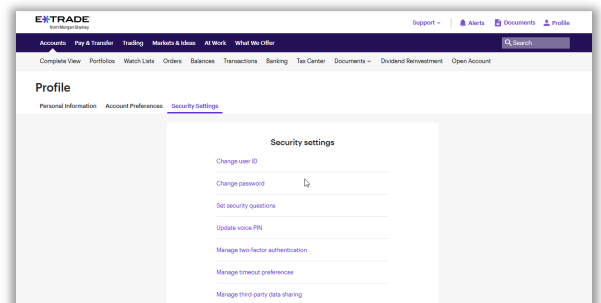
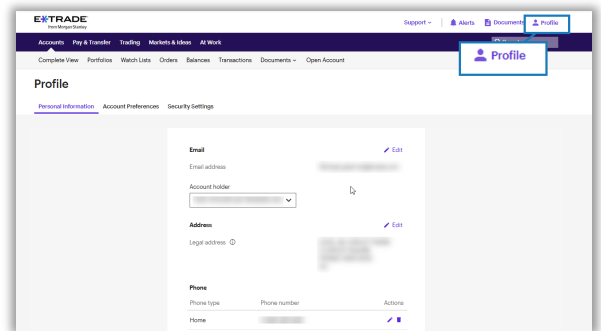
When you first log into your account on *etrade.com*, you'll see your stock plan account, along with any other E*TRADE accounts you may have, in the **Complete View** tab.

TIP: It's always a good idea to check your **Alerts** page for any updates.

Account details and preferences:

Be sure to check out the **My Profile** page, where you can add or update your:

- Personal information:** Personal email, personal phone number, legal address, and mailing address
- Security settings:** ID, password, security questions, two-factor authentication, and more

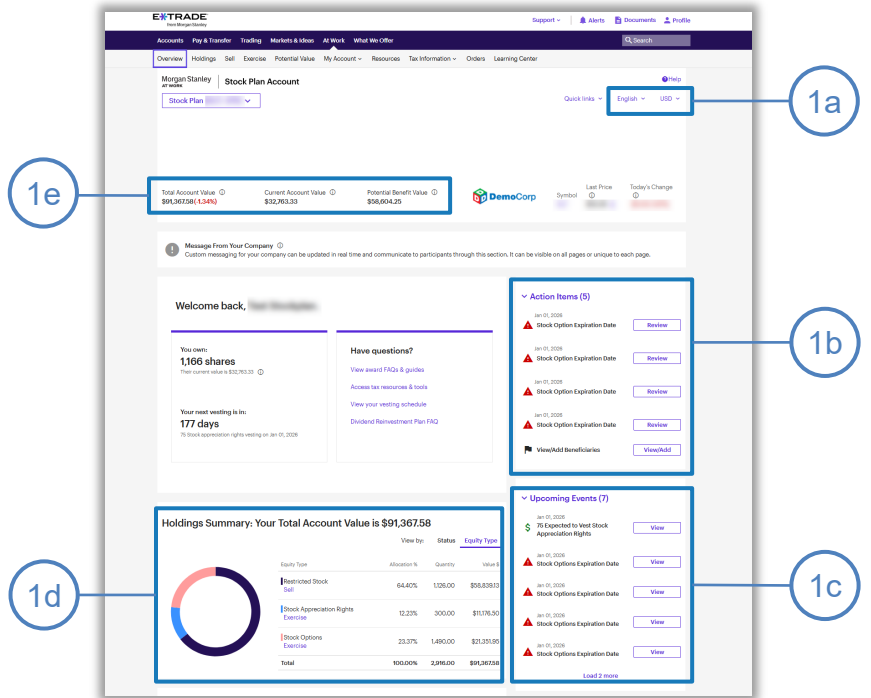


All images are for illustrative purposes only.

You can view and manage your stock plan benefits in the **At Work** section. Here you will find **ten** tabs full of features to help you make the most of your stock plan benefits. Below are some highlights of what you will find on each tab.

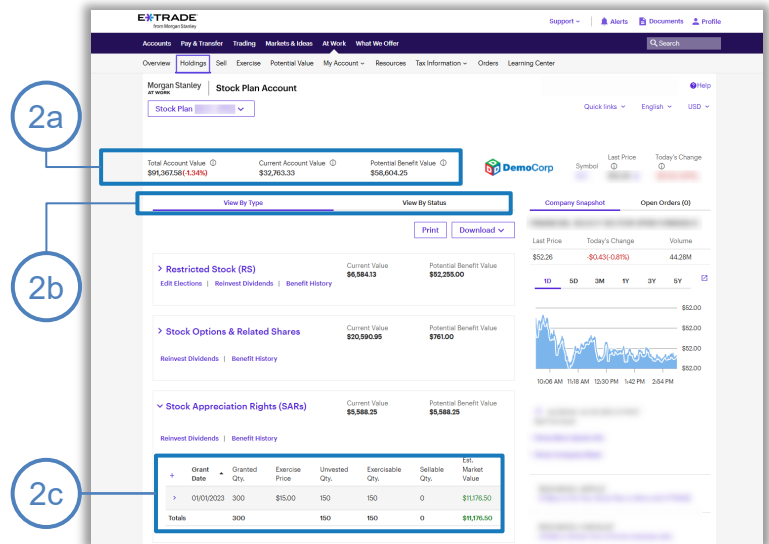
1. Overview:

- a. Select a preferred language or currency
- b. Action items that require your attention
- c. A schedule of upcoming events
- d. A quick summary of your holdings
- e. Your account values:
 - Total Account Value is the sum of your current account value and potential benefit.
 - Current Account Value is the sum of the current market value of employee stock purchase plan shares held, vested restricted stock units (RSUs) held, and vested and exercisable options (as applicable).
 - Potential Benefit Value is the sum of the current market value of unvested RSUs and unvested options (as applicable).



2. Holdings:

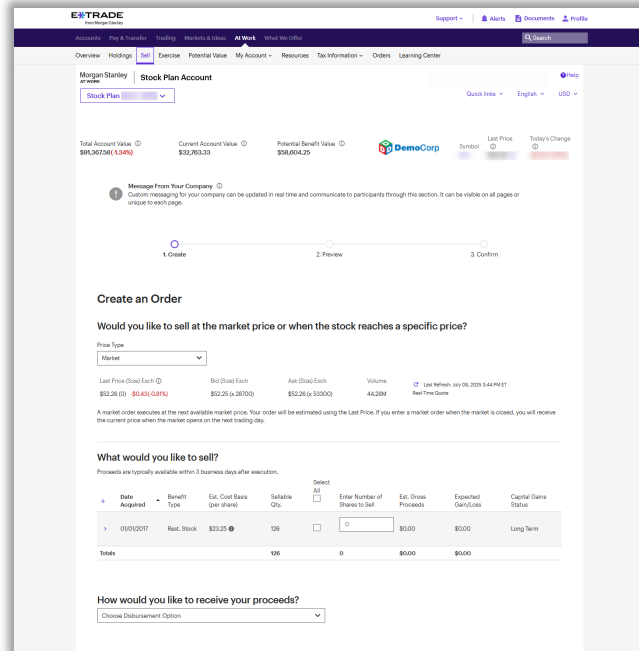
- a. Account values
- b. View equity holdings by type or status
- c. Grant-specific vesting schedules



3. Sell:

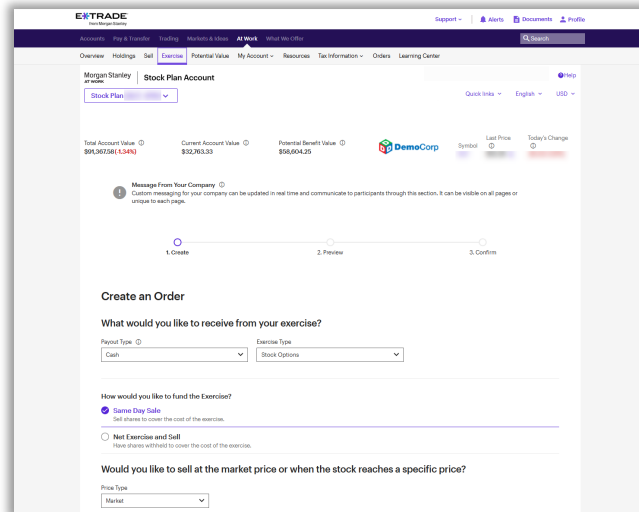
Follow the step-by-step experience to sell available shares.

If you decide to sell, once the trade settles, you can either have the proceeds sent to you or to another account outside of E*TRADE.



4. Exercise (if applicable):

If you have been granted stock options, this is where you will go to exercise any available vested options through a step-by-step experience.

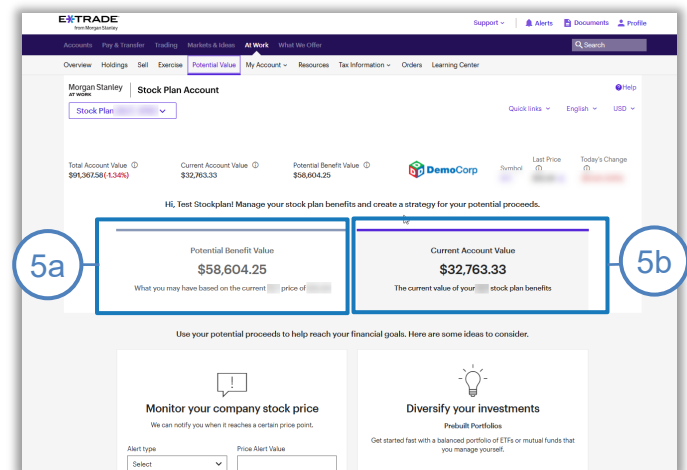


5. Potential Value:

The **Potential Value** section provides you with a comprehensive view of what is currently available to you and what may become available in the future.

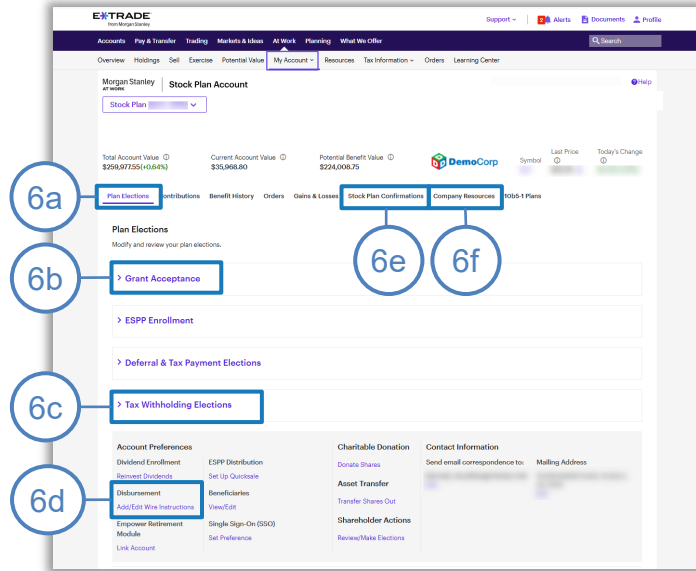
There are also several resources within this page to help manage potential proceeds.

- a. Potential Benefit Value is what you potentially have with your stock plan benefits.
- b. Current Account Value is what you currently have in stock plan benefits.



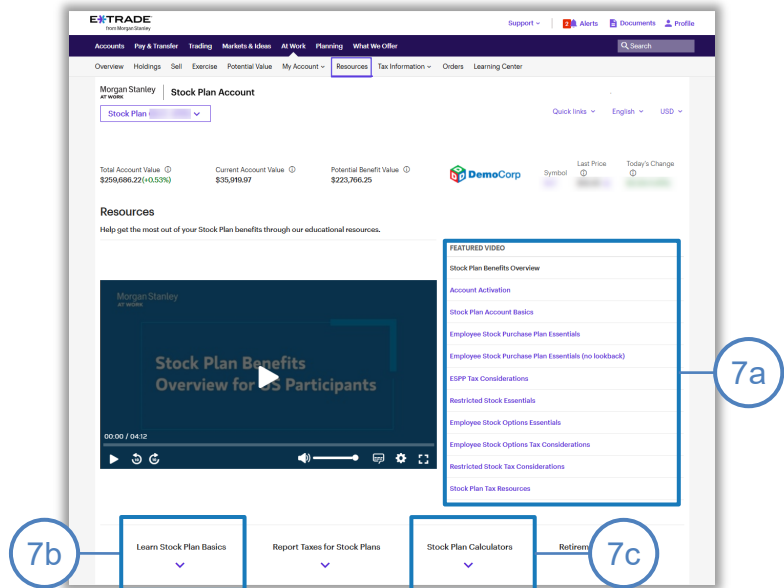
6. My Account:

- a. Make any plan elections
- b. Accept grants (if applicable)
- c. Make tax elections
 - When you expand the **Tax Withholding Elections** panel, you will see the taxes your company has deemed eligible for electing desired rate percentages.
 - If you choose to elect a new rate, it will appear as pending until it is approved by your company.
- d. Set up wire instructions (click **Add/Edit Wire Instructions**)
- e. Access stock plan confirmations
- f. View company documents and additional resources



7. Resources:

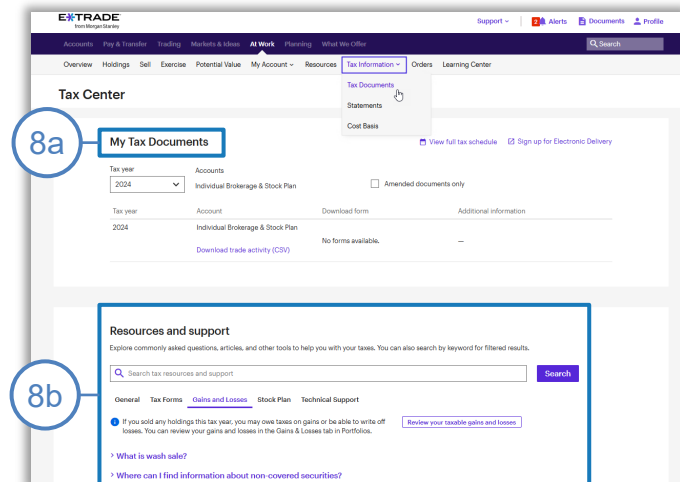
- a. Educational videos available with subtitles in 23 languages
- b. Educational articles
- c. Stock plan calculators



8. Tax Information/Tax Center:

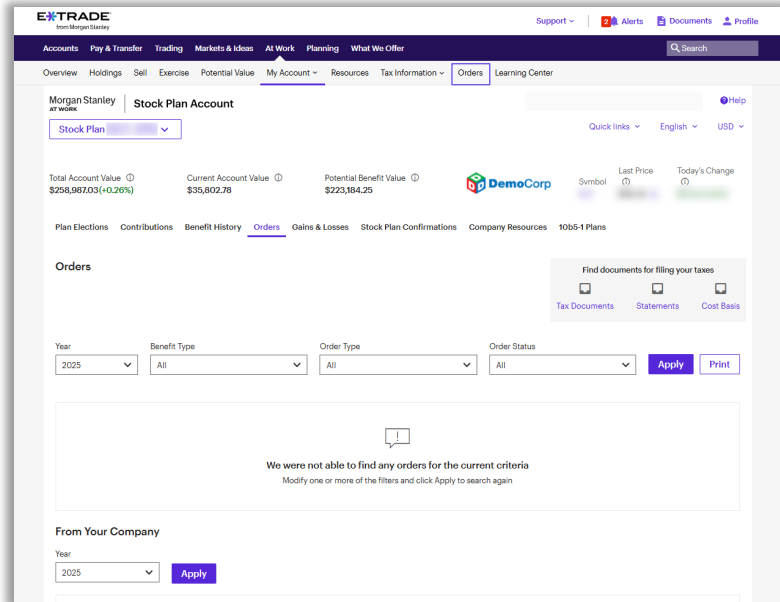
When you click on **Tax Documents** from the Tax Information drop down, you'll be directed to your **Tax Center**, where you can find important tax forms. You'll also find helpful resources and support, such as common tax FAQs and how-to guides for reporting taxes.

- a. Your tax documents
- b. FAQs



9. Orders:

Any orders placed in your stock plan account will appear here with additional details such as order status and order type.



Have Questions?

Contact us at 800-838-0908 24 hours a day, weekdays (from outside the U.S., visit etrade.com/contact for your country's toll-free number).

Investing in securities involves risk, including possible loss of principal.

Employee stock plan solutions are offered by E*TRADE Financial Corporate Services, Inc., Solium Capital LLC, Solium Plan Managers LLC and Morgan Stanley Smith Barney LLC ("MSSB"), which are part of Morgan Stanley at Work.

Morgan Stanley at Work services and stock plan accounts are provided by wholly owned subsidiaries of Morgan Stanley.

Morgan Stanley at Work stock plan accounts were previously referred to as Shareworks, StockPlan Connect or E*TRADE stock plan accounts, as applicable.

In connection with stock plan solutions offered by Morgan Stanley at Work, securities products and services are offered by MSSB, Member [SIPC](#).

E*TRADE from Morgan Stanley is a registered trademark of MSSB.

All entities are separate but affiliated subsidiaries of Morgan Stanley.

Content and services available to non-US participants may be different than those available to US participants.

The laws, regulations, and rulings addressed by the products, services, and publications offered by Morgan Stanley and its affiliates are subject to various interpretations and frequent change. Morgan Stanley and its affiliates do not warrant these products, services, and publications against different interpretations or subsequent changes of laws, regulations, and rulings. Morgan Stanley and its affiliates do not provide legal, accounting, or tax advice. Always consult your own legal, accounting, and tax advisors.